

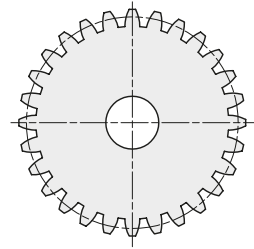
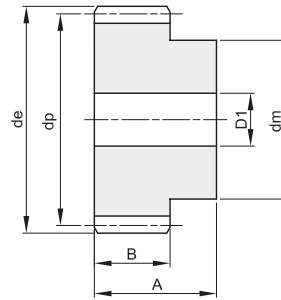
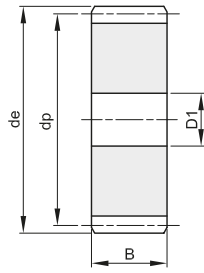


## RUOTE DENTATE CILINDRICHE IN ACCIAIO INOX CYLINDRICAL GEARS IN STAINLESS STEEL

### MODULO 1

ANGOLO DI PRESSIONE 20°

A	B
25	15



Materiale: INOX AISI 303

Z	codice	de	dp	dm	D1	Kg.
12	403010012	14	12	9		0,01
13	403010013	15	13	10		0,02
14	403010014	16	14	11		0,02
15	403010015	17	15	12		0,02
16	403010016	18	16	13		0,03
18	403010018	20	18	15	8	0,03
20	403010020	22	20	16	8	0,04
24	403010024	26	24	20	10	0,06
25	403010025	27	25	20	10	0,07
30	403010030	32	30	20	10	0,09
35	403010035	37	35	25	10	0,14
40	403010040	42	40	25	10	0,17

Z	codice	de	dp	dm	D1	Kg.
50	403010050	52	50	30	12	0,26
60	403010060	62	60	40	12	0,41
70	403010070	72	70	50	12	0,58
80	403010080	82	80		12	0,58
90	403010090	92	90		12	0,73
100	403010100	102	100		12	0,91
110	403010110	112	110		12	1,10
120	403010120	122	120		12	1,32

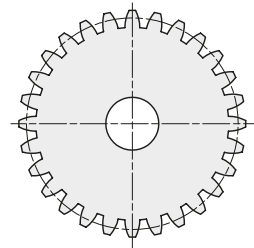
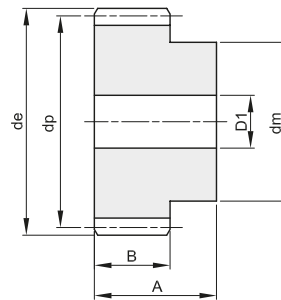
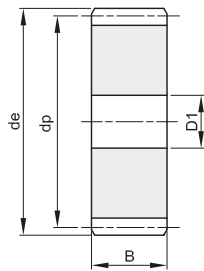


## RUOTE DENTATE CILINDRICHE IN ACCIAIO INOX CYLINDRICAL GEARS IN STAINLESS STEEL

### MODULO 1,5

ANGOLO DI PRESSIONE 20°

A	B
30	17



Materiale: INOX AISI 303

Z	codice	de	dp	dm	D1	Kg.
12	403015012	21,0	18,0	14	8	0,04
13	403015013	22,5	19,5	15	8	0,05
14	403015014	24,0	21,0	17	8	0,06
15	403015015	25,5	22,5	18	8	0,07
18	403015018	30,0	27,0	20	8	0,10
20	403015020	33,0	30,0	25	8	0,13
24	403015024	39,0	36,0	25	10	0,17
25	403015025	40,5	37,5	25	10	0,18
30	403015030	48,0	45,0	30	12	0,26
40	403015040	63,0	60,0	40	12	0,48
50	403015050	78,0	75,0	50	14	0,76
60	403015060	93,0	90,0	60	16	1,09

Z	codice	de	dp	dm	D1	Kg.
70	403015070	108,0	105,0	70	16	1,50
80	403015080	123,0	120,0		16	1,48
120	403015120	183,0	180,0		16	3,36

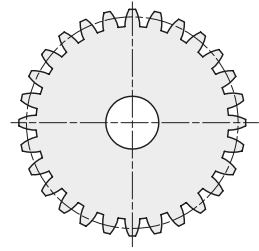
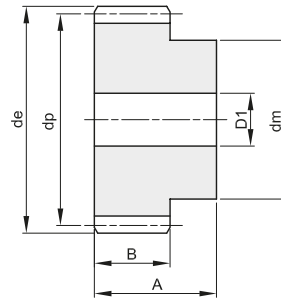
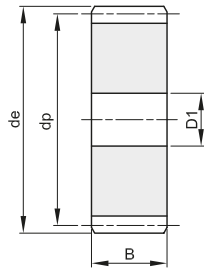


## RUOTE DENTATE CILINDRICHE IN ACCIAIO INOX CYLINDRICAL GEARS IN STAINLESS STEEL

### MODULO 2

ANGOLO DI PRESSIONE 20°

A	B
35	20



Materiale: INOX AISI 303

Z	codice	de	dp	dm	D1	Kg.
12	403020012	28	24	18	10	0,08
13	403020013	30	26	20	10	0,10
14	403020014	32	28	22	10	0,12
15	403020015	34	30	24	10	0,14
20	403020020	44	40	30	10	0,26
24	403020024	52	48	35	12	0,36
25	403020025	54	50	35	12	0,39
30	403020030	64	60	40	14	0,55
40	403020040	84	80	50	14	0,97
50	403020050	104	100	70	16	1,62
60	403020060	124	120	70	16	2,16
80	403020080	164	160		20	3,09

Z	codice	de	dp	dm	D1	Kg.

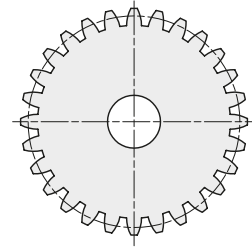
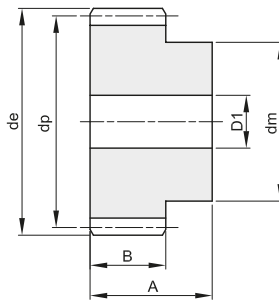


## RUOTE DENTATE CILINDRICHE IN ACCIAIO INOX CYLINDRICAL GEARS IN STAINLESS STEEL

### MODULO 2,5

ANGOLO DI PRESSIONE 20°

A	B
45	25



Materiale: INOX AISI 303

Z	codice	de	dp	dm	D1	Kg.
12	403025012	35,0	30,0	22	10	0,17
13	403025013	37,5	32,5	25	10	0,21
14	403025014	40,0	35,0	28	10	0,25
15	403025015	42,5	37,5	30	10	0,30
20	403025020	55,0	50,0	40	12	0,54
24	403025024	65,0	60,0	45	14	0,74
25	403025025	67,5	62,5	50	14	0,85
30	403025030	80,0	75,0	55	14	1,18
40	403025040	105,0	100,0	70	16	2,06
50	403025050	130,0	125,0	80	20	3,07
60	403025060	155,0	150,0	100	20	4,57

Z	codice	de	dp	dm	D1	Kg.

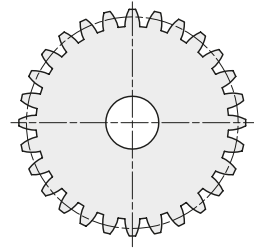
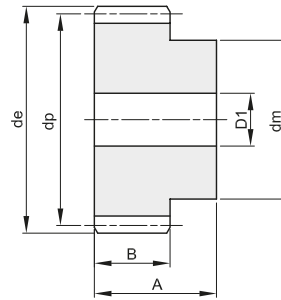
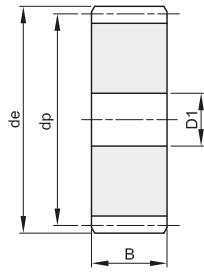


## RUOTE DENTATE CILINDRICHE IN ACCIAIO INOX CYLINDRICAL GEARS IN STAINLESS STEEL

### MODULO 3

ANGOLO DI PRESSIONE 20°

A	B
50	30



Materiale: INOX AISI 303

Z	codice	de	dp	dm	D1	Kg.
12	403030012	42	36	27	12	0,28
15	403030015	51	45	35	12	0,47
20	403030020	66	60	45	14	0,84
24	403030024	78	72	50	16	1,18
25	403030025	81	75	60	16	1,39
30	403030030	96	90	60	16	1,85
40	403030040	126	120	80	20	3,31
50	403030050	156	150		20	4,06
60	403030060	186	180		20	5,89

Z	codice	de	dp	dm	D1	Kg.

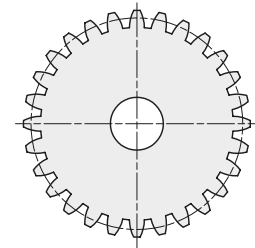
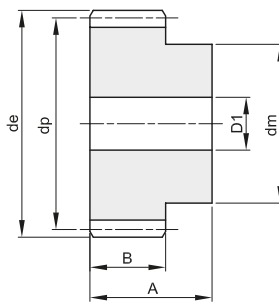


## RUOTE DENTATE CILINDRICHE IN ACCIAIO INOX CYLINDRICAL GEARS IN STAINLESS STEEL

### MODULO 4

ANGOLO DI PRESSIONE 20°

A	B
60	40



Materiale: INOX AISI 303

Z	codice	de	dp	dm	D1	Kg.
12	403040012	56	48	35	14	0,63
13	403040013	60	52	40	14	0,78
14	403040014	64	56	45	14	0,93
15	403040015	68	60	45	14	1,05
20	403040020	88	80	60	16	1,90
24	403040024	104	96	75	20	2,79
25	403040025	108	100	75	20	2,98
30	403040030	128	120	75	20	4,06

Z	codice	de	dp	dm	D1	Kg.