

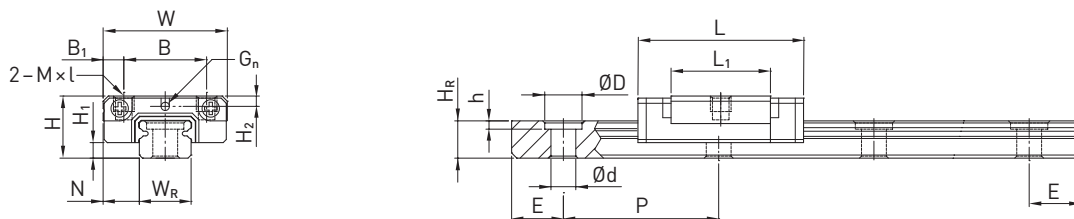
Guide Lineari

Serie MG

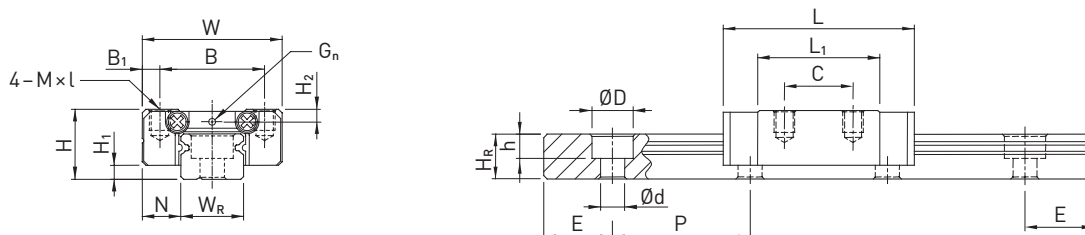
3.5.12 Dimensioni del carrello MG

3.5.12.1 MGN

MGN05



MGN07, MGN09, MGN12



MGN15

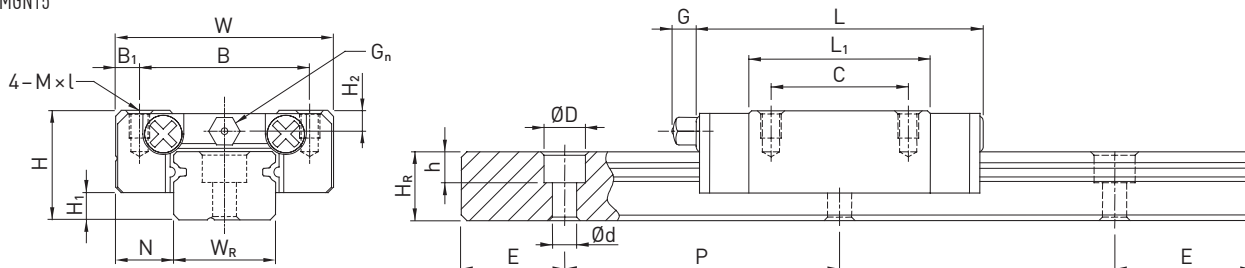


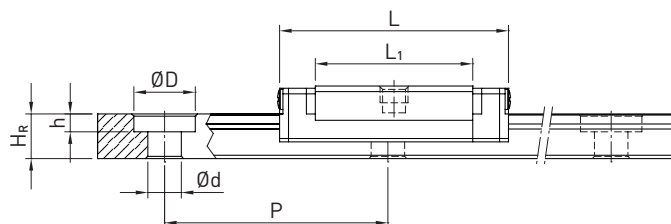
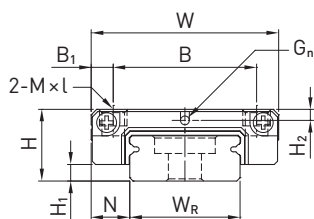
Tabella 3.80 Dimensioni del carrello

Serie/ Taglia	Dimensioni di montaggio [mm]			Dimensioni del carrello [mm]										Coefficienti di carico [N]		Peso [kg]
	H	H ₁	N	W	B	B ₁	C	L ₁	L	G	G _n	M × l	H ₂	C _{dyn}	C ₀	
MGN05C	6	1.5	3.5	12	8	2.0	—	9.6	16.0	—	Ø0.8	M2 × 1.5	1.0	540	840	0.008
MGN05H							—	12.6	19.0					670	1,080	0.010
MGN07C	8	1.5	5.0	17	12	2.5	8	13.5	22.5	—	Ø1.2	M2 × 2.5	1.5	980	1,245	0.010
MGN07H							13	21.8	30.8					1,372	1,960	0.020
MGN09C	10	2.0	5.5	20	15	2.5	10	18.9	28.9	—	Ø1.4	M3 × 3	1.8	1,860	2,550	0.020
MGN09H							16	29.9	39.9					2,550	4,020	0.030
MGN12C	13	3.0	7.5	27	20	3.5	15	21.7	34.7	—	Ø2	M3 × 3.5	2.5	2,840	3,920	0.030
MGN12H							20	32.4	45.4					3,720	5,880	0.050
MGN15C	16	4.0	8.5	32	25	3.5	20	26.7	42.1	4.5	M3	M3 × 4	3.0	4,610	5,590	0.060
MGN15H							25	43.4	58.8					6,370	9,110	0.090

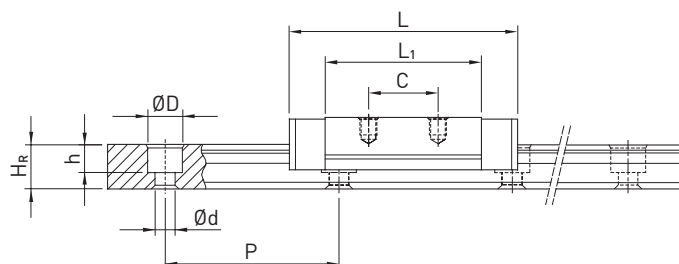
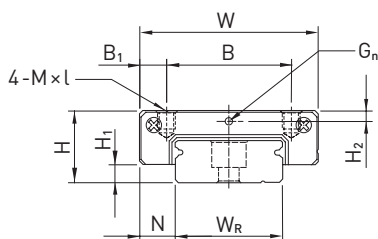
Per le dimensioni della rotaia, s.v Pagina 96, per raccordi standard e optional di lubrificazione vedi Pagina 126

3.5.12.2 MGW

MGW05



MGW07, MGW09, MGW12



MGW15

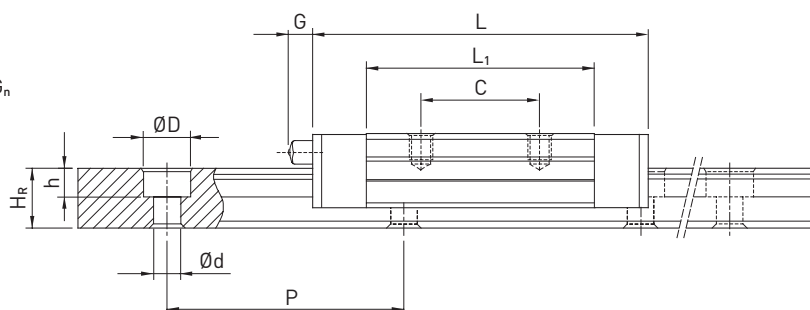
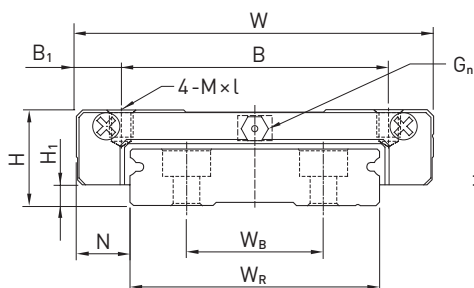


Tabella 3.81 Dimensioni del carrello

Serie/ Taglia	Dimensioni di montaggio [mm]			Dimensioni del carrello [mm]										Coefficienti di carico [N]		Peso [kg]
	H	H ₁	N	W	B	B ₁	C	L ₁	L	G	G _n	M × l	H ₂	C _{dyn}	C ₀	
MGW05C	6.5	1.5	3.5	17	13	2.0	—	14.1	20.5	—	Ø1.2	M2.5 × 1.5	1.00	680	1,180	0.02
MGW07C	9.0	1.9	5.5	25	19	3.0	10	21.0	31.2	—	Ø1.2	M3 × 3	1.85	1,370	2,060	0.02
MGW07H							19	30.8	41.0	1,770						
MGW09C	12.0	2.9	6.0	30	21	4.5	12	27.5	39.3	—	Ø1.4	M3 × 3	2.40	2,750	4,120	0.04
MGW09H							23	38.5	50.7	3,430						
MGW12C	14.0	3.4	8.0	40	28	6.0	15	31.3	46.1	—	Ø2	M3 × 3.6	2.80	3,920	5,590	0.07
MGW12H							28	45.6	60.4	5,100						
MGW15C	16.0	3.4	9.0	60	45	7.5	20	38.0	54.8	5.2	M3	M4 × 4.2	3.20	6,770	9,220	0.14
MGW15H							35	57.0	73.8	8,930						

Per le dimensioni della rotaia, s.v Pagina 96, per raccordi standard e optional di lubrificazione vedi Pagina 126

3.5.13 Dimensioni della rotaia MG

3.5.13.1 Dimensioni MGN_R

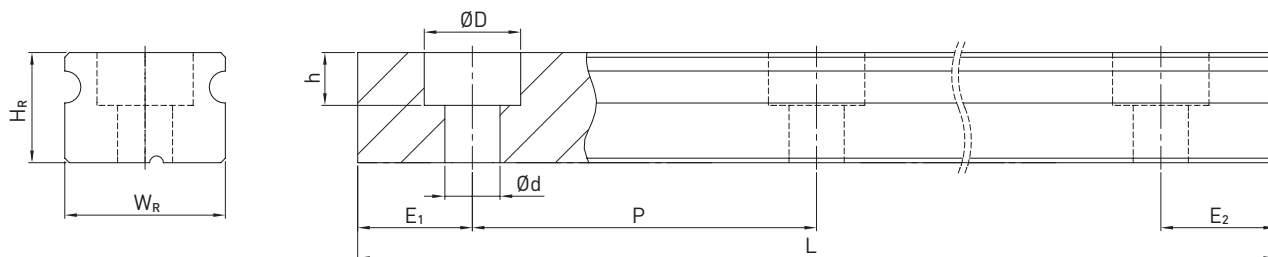


Tabella 3.82 Dimensioni della rotaia MGN_R

Serie/ Taglia	Vite di montaggio per rotaia [mm]	Dimensioni della rotaia [mm]						Lunghezza max. [mm]	Lunghezza max. E ₁ = E ₂ [mm]	E _{1/2} min [mm]	E _{1/2} max [mm]	Peso [kg/m]
		W _R	H _R	D	h	d	P					
MGNR05R	M2 × 6	5	3.6	3.6	0.8	2.4	15	250	225	4	11	0.15
MGNR07R	M2 × 6	7	4.8	4.2	2.3	2.4	15	600	585	5	12	0.22
MGNR09R	M3 × 8	9	6.5	6.0	3.5	3.5	20	1,200	1,180	5	15	0.38
MGNR12R	M3 × 8	12	8.0	6.0	4.5	3.5	25	2,000	1,975	5	20	0.65
MGNR15R	M3 × 10	15	10.0	6.0	4.5	3.5	40	2,000	1,960	6	34	1.06

3.5.13.2 Dimensioni MGW_R

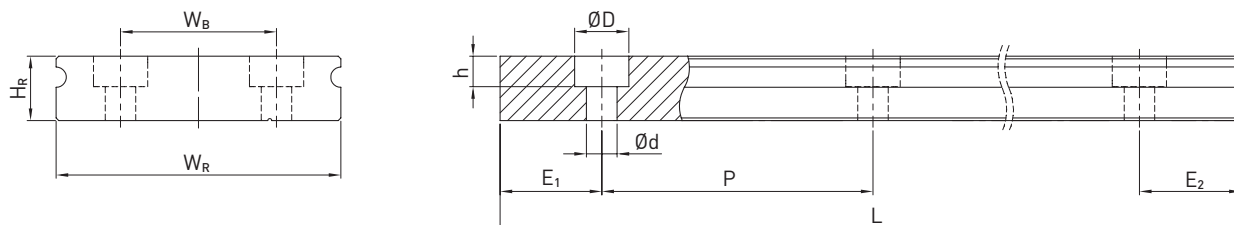


Tabella 3.83 Dimensioni della rotaia MGW_R

Serie/ Taglia	Viti per rotaia [mm]	Dimensioni della Rotaia [mm]							Lungh. max. [mm]	Lunghezza max. E ₁ = E ₂ [mm]	E _{1/2} min [mm]	E _{1/2} max [mm]	Peso [kg/m]
		W _R	H _R	W _B	D	h	d	P					
MGWR05R	M2.5 × 7	10	4.0	—	5.5	1.6	3.0	20	250	220	4	11	0.34
MGWR07R	M3 × 6	14	5.2	—	6.0	3.2	3.5	30	600	570	6	24	0.51
MGWR09R	M3 × 8	18	7.0	—	6.0	4.5	3.5	30	1,200	1,170	6	24	0.91
MGWR12R	M4 × 8	24	8.5	—	8.0	4.5	4.5	40	2,000	1,960	8	32	1.49
MGWR15R	M4 × 10	42	9.5	23	8.0	4.5	4.5	40	2,000	1,960	8	32	2.86

Nota:

1. La tolleranza per E corrisponde a un valore tra +0,5 e 1 mm.
2. Senza indicazione della dimensione E_{1/2}, considerando E_{1/2} min è possibile determinare il numero massimo di fori di montaggio.
3. Le rotaie sono tagliate alla lunghezza desiderata. Senza alcuna indicazione della dimensione E_{1/2} saranno eseguite simmetriche.